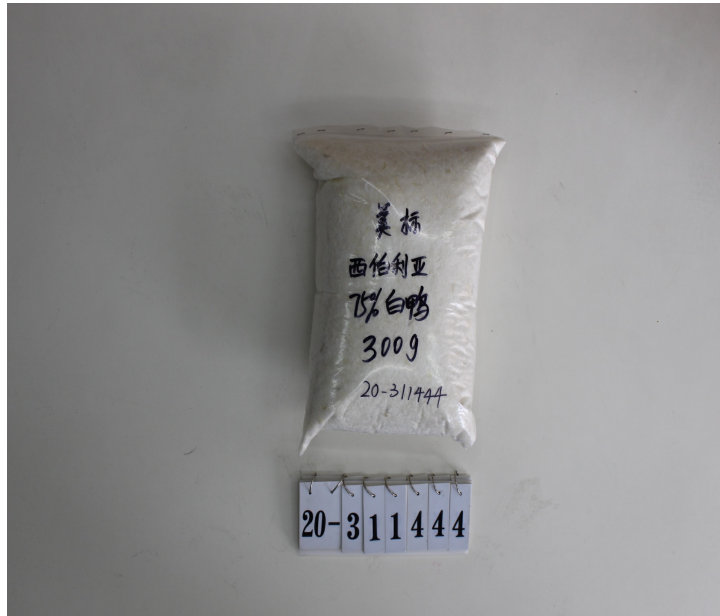


Joyce Sheng
Zhejiang Samsung Down Co., Ltd
No.288, Xiaoshao East Road,
Xintang Street,
Xiaoshan District,
Hangzhou, Zhejiang 311201
China

joyce@samsungdown.com
fei@samsungdown.com
3-Day

Arrival Date: Tue 23 June 2020
Rush Report Date: Tue 30 June 2020

Sample Type: Plumage
Shipped By: SF 1089596003350
Sample Identification: 75% siberia white duck down
LOT: SM034-75WDD-20001



¹ CNAS Accredited

² CMA Accredited

This analysis represents (within normal testing variances) the test results from the sample(s) submitted. The analysis may not represent the entire lot, batch or production run. In no event shall IDFL be responsible or liable for any direct, indirect, punitive, incidental, special, or consequential damages whatsoever arising out of or connected with the use of, misuse of, or reliance upon such results or analysis. This test report is subject to the Terms and Conditions found at www.idfl.com.

IDFL LABORATORY AND INSTITUTE

IDFL SALT LAKE
1455 South 1100 East
Salt Lake City, UT 84105
USA
+1 801 467 7611
info@idfl.com

IDFL EUROPE AG
Zürcherstrasse 282
CH-8500 Frauenfeld
Switzerland
+41 52 765 1574
europe@idfl.com

IDFL CHINA
Tonghui Mid-Road 688, Xiaoshan
Hangzhou Zhejiang 311200
China
+86 571 8273 6561
china@idfl.com

IDFL TAIPEI
2F., No. 163 Sec. 2, Wenhua Rd.
Banqiao District, New Taipei City
Taiwan
+886 2 2259 1178
taiwan@idfl.com

Approved By

www.idfl.com

Client 2313

XS

Sample 1 of 1

Page 1 of 6



Rush Test Report

75% siberia white duck down

IDFL # 20-311444

Zhejiang Samsung Down Co., Ltd
Tue 30 June 2020

Test Orders Summary

| Test | Test Component | Result | Expected Value |
|---|-------------------------|--------------------------|----------------|
| Content IDFB Part 3 2013 | Down Clusters | 79.7% | 75.0% |
| Species Down & Feathers IDFB Part 12 2013 | Total Goose | 0% | |
| | Total Duck | 100% | |
| Steam Fill Power IDFB Part 10-B 2015 | Final Fill Power Volume | 680 in ³ /30g | |
| Oxygen IDFB Part 7 2013 | Oxygen | 1.6 mg/100g | |
| Turbidity IDFB Part 11 2013 | Turbidity Glass Tube | 1000 mm | |
| Fat and Oil IDFB Part 4 2013 | Fat and Oil | 0.9% | |
| Moisture IDFB Part 5 2013 | Moisture Content | 11.6% | |
| Odor IDFL 30 2018 | Actual Lab Test | 4 | |

¹ CNAS Accredited

² CMA Accredited

This analysis represents (within normal testing variances) the test results from the sample(s) submitted. The analysis may not represent the entire lot, batch or production run. In no event shall IDFL be responsible or liable for any direct, indirect, punitive, incidental, special, or consequential damages whatsoever arising out of or connected with the use of, misuse of, or reliance upon such results or analysis. This test report is subject to the Terms and Conditions found at www.idfl.com.

IDFL LABORATORY AND INSTITUTE

IDFL SALT LAKE
1455 South 1100 East
Salt Lake City, UT 84105
USA
+1 801 467 7611
info@idfl.com

IDFL EUROPE AG
Zürcherstrasse 282
CH-8500 Frauenfeld
Switzerland
+41 52 765 1574
europe@idfl.com

IDFL CHINA
Tonghui Mid-Road 688, Xiaoshan
Hangzhou Zhejiang 311200
China
+86 571 8273 6561
china@idfl.com

IDFL TAIPEI
2F., No. 163 Sec. 2, Wenhua Rd.
Banqiao District, New Taipei City
Taiwan
+886 2 2259 1178
taiwan@idfl.com

Approved By
www.idfl.com
Client 2313
XS
Sample 1 of 1
Page 2 of 6



Rush Test Report

75% siberia white duck down

IDFL # 20-311444

Zhejiang Samsung Down Co., Ltd
Tue 30 June 2020

Content IDFB Part 3 2013^{1, 2}

| | |
|---------------------------------------|--------|
| Down Clusters | 79.7% |
| Down Fibers | 3.7% |
| Waterfowl Feather Fibers | 2.3% |
| Waterfowl Feathers | 13.8% |
| Broken and Damaged Waterfowl Feathers | 0.3% |
| Quill | 0.0% |
| Landfowl | 0.0% |
| Residue | 0.2% |
| Total | 100.0% |

Species Down & Feathers IDFB Part 12 2013^{1, 2}

| | |
|----------------|------|
| Goose Down | 0% |
| Duck Down | 100% |
| Goose Feathers | 0% |
| Duck Feathers | 100% |
| Total Goose | 0% |
| Total Duck | 100% |

Steam Fill Power IDFB Part 10-B 2015^{1, 2}

| | |
|--------|--------------------------|
| Volume | 680 in ³ /30g |
|--------|--------------------------|

Oxygen IDFB Part 7 2013^{1, 2}

| | |
|--------|-------------|
| Oxygen | 1.6 mg/100g |
|--------|-------------|

Turbidity IDFB Part 11 2013^{1, 2}

| | |
|----------------------|----------|
| Turbidity Glass Tube | 1000 mm |
| Turbidity NTU | 1.03 NTU |

Fat and Oil IDFB Part 4 2013

| | |
|-------------|------|
| Fat and Oil | 0.9% |
|-------------|------|

Tested by the following locations:

CIQ - Down & Feather Testing Lab Xiaoshan Zhejiang Imp. & Exp. Comm Insp

Moisture IDFB Part 5 2013^{1, 2}

| | |
|------------------|-------|
| Moisture Content | 11.6% |
|------------------|-------|

¹ CNAS Accredited

² CMA Accredited

This analysis represents (within normal testing variances) the test results from the sample(s) submitted. The analysis may not represent the entire lot, batch or production run. In no event shall IDFL be responsible or liable for any direct, indirect, punitive, incidental, special, or consequential damages whatsoever arising out of or connected with the use of, misuse of, or reliance upon such results or analysis. This test report is subject to the Terms and Conditions found at www.idfl.com.

IDFL LABORATORY AND INSTITUTE

IDFL SALT LAKE
1455 South 1100 East
Salt Lake City, UT 84105
USA
+1 801 467 7611
info@idfl.com

IDFL EUROPE AG
Zürcherstrasse 282
CH-8500 Frauenfeld
Switzerland
+41 52 765 1574
europe@idfl.com

IDFL CHINA
Tonghui Mid-Road 688, Xiaoshan
Hangzhou Zhejiang 311200
China
+86 571 8273 6561
china@idfl.com

IDFL TAIPEI
2F., No. 163 Sec. 2, Wenhua Rd.
Banqiao District, New Taipei City
Taiwan
+886 2 2259 1178
taiwan@idfl.com

Approved By
www.idfl.com
Client 2313
XS
Sample 1 of 1
Page 3 of 6



Rush Test Report

75% siberia white duck down

IDFL # 20-311444
 Zhejiang Samsung Down Co., Ltd
 Tue 30 June 2020

Odor IDFL 30 2018

CHECK-IN

| | |
|---|--------|
| 1. ODOR UPON ARRIVAL : Odor upon opening of shipping box | Normal |
| 2. INITIAL ODOR of SAMPLE : Odor of sample after removal from shipping box and any packaging material (such as plastic, etc.) | Normal |
| 3. LATER ODOR of SAMPLE : (24 hours after removal from packaging) | N/A |
| 4. ODOR of PACKAGING : (Any odor that might exist in packaging) | Normal |

OPENING ROOM

| | |
|---|--------|
| 5. INITIAL ODOR - FILL MATERIAL : Odor of fill material immediately after cutting open samples | Normal |
| 6. LATER ODOR - FILL MATERIAL : Odor after leaving fill material in a screened box for 24 hours | N/A |

LAB TEST

| | |
|--|-----|
| 7. ACTUAL LAB TEST : (1-5 'Nose' Lab Test) | 4 |
| 8. OTHER COMMENTS : | N/A |
| 9. CONCLUSION : | N/A |

Rating Scale

| | |
|---|-------------|
| 1 | Very Bad |
| 2 | Bad/Strange |
| 3 | Borderline |
| 4 | Normal Odor |
| 5 | Above |

Bioburden EN 1884 1998

Results TBD

Tested by the following locations:

CIQ - Down & Feather Testing Lab Xiaoshan Zhejiang Imp. & Exp. Comm Insp

Dust IDFL 21

| Description | Evaluation | Comments |
|-------------|------------|----------|
| Check-In | | |

¹ CNAS Accredited

² CMA Accredited

This analysis represents (within normal testing variances) the test results from the sample(s) submitted. The analysis may not represent the entire lot, batch or production run. In no event shall IDFL be responsible or liable for any direct, indirect, punitive, incidental, special, or consequential damages whatsoever arising out of or connected with the use of, misuse of, or reliance upon such results or analysis. This test report is subject to the Terms and Conditions found at www.idfl.com.

IDFL LABORATORY AND INSTITUTE

IDFL SALT LAKE
 1455 South 1100 East
 Salt Lake City, UT 84105
 USA
 +1 801 467 7611
 info@idfl.com

IDFL EUROPE AG
 Zürcherstrasse 282
 CH-8500 Frauenfeld
 Switzerland
 +41 52 765 1574
 europe@idfl.com

IDFL CHINA
 Tonghui Mid-Road 688, Xiaoshan
 Hangzhou Zhejiang 311200
 China
 +86 571 8273 6561
 china@idfl.com

IDFL TAIPEI
 2F., No. 163 Sec. 2, Wenhua Rd.
 Banqiao District, New Taipei City
 Taiwan
 +886 2 2259 1178
 taiwan@idfl.com

Approved By

www.idfl.com
 Client 2313
 XS
 Sample 1 of 1

| | | |
|---|------------------|--------------------------|
| 1. DUST UPON ARRIVAL Presence of dust on the inside of plastic packaging. | Low Dust | N/A |
| Opening Room | | |
| 2. DUST BETWEEN COVER AND SHELL (PILLOWS) Examine the exterior of the pillow and the interior of the cover for dust. Vigorously shake cover to check for dust. | N/A | N/A |
| 3. DUST FROM FINISHED PRODUCT Firmly strike product before opening. | N/A | N/A |
| 4. DUST DURING NETFILL Shake empty shell. | N/A | N/A |
| Laboratory | | |
| 5. DUST EVALUATION Check for dust using official IDFL method 21. | 4 | N/A |
| 5. No Dust 4. Low Dust 3. Moderate Dust 2. High Dust | | 1. Very High Dust |
| Conclusion | | |
| 6. SOURCE OF DUST Dust comes from packaging, fabric, or filling material. | Filling Material | N/A |
| 7. MICROSCOPIC EVALUATION Pictures. | | |

Microscopic Pictures

The picture below represents the type of dust particles found in the sample. It does not represent the quantity of dust

¹ CNAS Accredited

² CMA Accredited

This analysis represents (within normal testing variances) the test results from the sample(s) submitted. The analysis may not represent the entire lot, batch or production run. In no event shall IDFL be responsible or liable for any direct, indirect, punitive, incidental, special, or consequential damages whatsoever arising out of or connected with the use of, misuse of, or reliance upon such results or analysis. This test report is subject to the Terms and Conditions found at www.idfl.com.

IDFL LABORATORY AND INSTITUTE

IDFL SALT LAKE
1455 South 1100 East
Salt Lake City, UT 84105
USA
+1 801 467 7611
info@idfl.com

IDFL EUROPE AG
Zürcherstrasse 282
CH-8500 Frauenfeld
Switzerland
+41 52 765 1574
europe@idfl.com

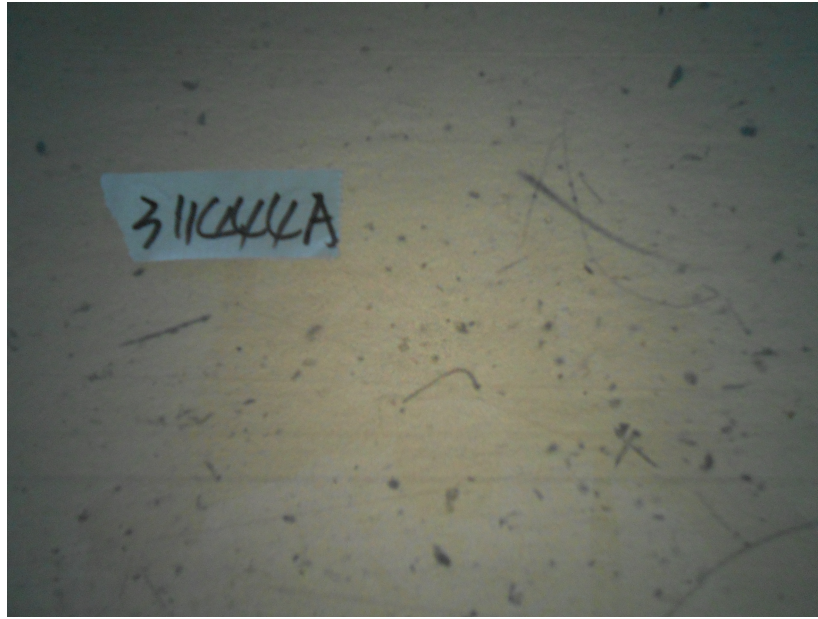
IDFL CHINA
Tonghui Mid-Road 688, Xiaoshan
Hangzhou Zhejiang 311200
China
+86 571 8273 6561
china@idfl.com

IDFL TAIPEI
2F., No. 163 Sec. 2, Wenhua Rd.
Banqiao District, New Taipei City
Taiwan
+886 2 2259 1178
taiwan@idfl.com



Approved By

www.idfl.com
Client 2313
XS
Sample 1 of 1
Page 5 of 6



USA-2000 Labeling Standard - Down & Feather Products USA

| Evaluation Component | Test | Test Component | Requirement | Result | Finding |
|------------------------------|---|-----------------------------|-----------------|-------------------------------|---------|
| Basic | Oxygen IDFB Part 7 2013 | Oxygen | Max 10 mg/100g | 1.6 mg/100g | Pass |
| | Turbidity IDFB Part 11 2013 | Turbidity | Min 300 mm | 1000 mm | Pass |
| DOWN - MINIMUM 75% DOWN | Content IDFB Part 3 2013 | Down Cluster | Min 75% | 79.7% | Pass |
| | | Landfowl Feathers | Max 2% | 0.0% | Pass |
| | | Broken and Damaged Feathers | Max 2% | 0.3% | Pass |
| | | Residue | Max 2% | 0.2% | Pass |
| | | Down Fiber | Max 10% | 3.7% | Pass |
| | | Feather Fiber | Max 10% | 2.3% | Pass |
| | | Quill | Max 0 % | 0.0 % | Pass |
| Fill Power Claim | Steam Fill Power IDFB Part 10-B 2015 | Fill Power | | 680 in³/30g | - |
| Hypoallergenic / Super-Clean | Oxygen IDFB Part 7 2013 | Oxygen | Max 4.8 mg/100g | 1.6 mg/100g | Pass |
| | Turbidity IDFB Part 11 2013 | Turbidity | Min 500 mm | 1000 mm | Pass |
| Total Duck | Species Down & Feathers IDFB Part 12 2013 | Duck (Down & Feathers) | Min 90% | 100% | Pass |

Suggested Label based on USA requirements

DUCK DOWN
 (MINIMUM 75% DOWN)

¹ CNAS Accredited

² CMA Accredited

This analysis represents (within normal testing variances) the test results from the sample(s) submitted. The analysis may not represent the entire lot, batch or production run. In no event shall IDFL be responsible or liable for any direct, indirect, punitive, incidental, special, or consequential damages whatsoever arising out of or connected with the use of, misuse of, or reliance upon such results or analysis. This test report is subject to the Terms and Conditions found at www.idfl.com.

IDFL LABORATORY AND INSTITUTE

IDFL SALT LAKE
 1455 South 1100 East
 Salt Lake City, UT 84105
 USA
 +1 801 467 7611
 info@idfl.com

IDFL EUROPE AG
 Zürcherstrasse 282
 CH-8500 Frauenfeld
 Switzerland
 +41 52 765 1574
 europe@idfl.com

IDFL CHINA
 Tonghui Mid-Road 688, Xiaoshan
 Hangzhou Zhejiang 311200
 China
 +86 571 8273 6561
 china@idfl.com

IDFL TAIPEI
 2F., No. 163 Sec. 2, Wenhua Rd.
 Banqiao District, New Taipei City
 Taiwan
 +886 2 2259 1178
 taiwan@idfl.com

Approved By

www.idfl.com
 Client 2313
 XS
 Sample 1 of 1