



**COSTCO WHOLESALE**  
**COMPLIANCE, QUALITY and**  
**PERFORMANCE TEST**  
**PROTOCOL SL-2307**  
**SOFTLINES APPAREL**

**IDFL #: 20-305087**

Date: 2-Apr-2020

**EVALUATION REPORT - Market: Canada**

<b>DOWN AND FEATHER TESTING</b>					
<b>Test Property</b>	<b>Test Method</b>	<b>Based on expected Down label: 90%</b>		<b>Results</b>	<b>Rating</b>
<b>Content Analysis</b>	IDFB 3	Down Cluster	Min 67.5%	92.2%	Pass
		Down Fibre		3.1%	
		Feather Fibre		1.7%	
		Total Fibre	Max 28.0%	4.8%	Pass
		Waterfowl Feathers ≤ 60 mm	Max 32.5%	2.9%	Pass
		Waterfowl Feathers > 60 mm	Max 10.0%	0.0%	Pass
		Broken / Damaged Feathers		0.0%	
		Quill		0.0%	
		Landfowl Residue		0.1%	
		Landfowl and Residue	Max 5.0%	0.1%	Pass
		<b>TOTAL</b>			<b>100.0%</b>
<b>Species Identification</b>	IDFB 12	Goose Down		0%	
		Duck Down		100%	
		Goose Feathers		0%	
		Duck Feathers		100%	
		<b>TOTAL GOOSE</b>	<i>Claim: DUCK</i> Min 90%	<b>0%</b>	Pass
		<b>TOTAL DUCK</b>	Duck	<b>100%</b>	
<b>Color White</b>	IDFB 16	<i>Claim: White</i>	Max Dark 1.0%	0.80%	Pass
<b>Fill Power</b>	IDFB 10B	(in <sup>3</sup> / 30g)	Max -5% of 800	800	Pass
<b>Turbidity</b>	IDFB 11	(Others, JP, TW, KOR, AUS)	Min 500	1000	Pass
<b>Oxygen Number</b>	IDFB 7	(Others, TW, KOR, AUS)	Min 4.8	1.6	Pass
<b>Penetration resistance of cloth-Tumbling method</b>	IDFL 20-1 (Fabric) IDFL 20-2 (Bedding) IDFL 20-3 (Garments) IDFL 20-4 (Channeled Fabric)	Before Laundering	Min 4	N/A	N/A
		After 1x Laundering	Min 4	N/A	N/A
<b>Net Fill Weight</b>	IDFB 17	<i>Expected Fill Weight (g)</i> N/A	Min N/A	N/A	N/A
<b>IDFL Labeling Suggestion for Canadian Market:</b>		Provincial Label: Duck Down Federal Label: Duck Down OR: 90% duck down, 10% duck feathers			

Comments:

Approved by

**IDFL LABORATORY AND INSTITUTE**

[www.idfl.com](http://www.idfl.com)

Certified Laboratory: IDFB • EDFA Associations: AATCC • ADFC • ASTM • CFDA • DAC • EDFA • IABFLO • TFEA

**IDFL USA**  
1455 South 1100 East  
Salt Lake City, UT 84105 USA  
Tel: +1 801 467 7611  
info@idfl.com

**IDFL EUROPE**  
Zürcherstrasse 282  
8500 Frauenfeld SWITZERLAND  
Tel: +41 52 765 1574  
europe@idfl.com

**IDFL CHINA**  
Tonghu Mid-Road 688, Jinlu Yinzuo  
Building 1 Floor 5 Hangzhou, Zhejiang 311208 CHINA  
Tel: +86 571 8273 6561  
china@idfl.com

**IDFL TAIWAN**  
3F/4F., No. 163, Sec. 2, Wenhua Rd.  
Banqiao, New Taipei City 22047 TAIWAN  
Tel: +886 2 2259 1178  
taiwan@idfl.com

# Final Test Report

Sample ID-Treated Material SM314S  
90% Washed White Duck Down(Texcote  
Nano DWR)

**IDFL # 20-305087**

Zhejiang Samsung Down Co., Ltd  
Thu 2 April 2020

**Michael Mao**  
Zhejiang Samsung Down Co., Ltd  
No.288, Xiaoshao East Road,  
Xintang Street,  
Xiaoshan District,  
Hangzhou, Zhejiang 311201  
China

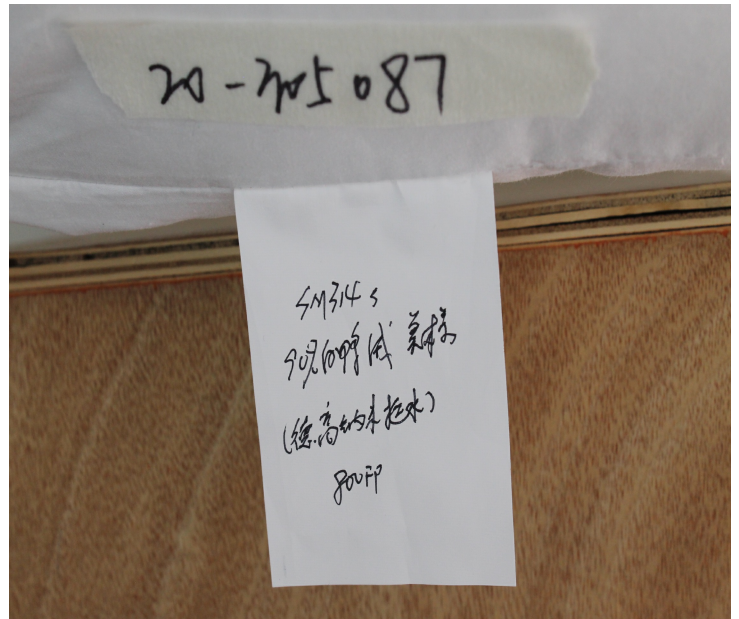
michael@samsungdown.com  
cyrel@samsungdown.com  
Normal (8-10 Days)

**Arrival Date:** Mon 16 March 2020

**Report Date:** Sat 28 March 2020

**Revised Sample ID Report Date:** Thu 2 April 2020

**Sample Type:** Pillow  
**Shipped By:** SF 1075057820963  
**Label:**  
**Sample Identification:** Sample ID-Treated Material  
SM314S 90% Washed White Duck Down(Texcote Nano DWR),  
BRAND NAME:RUDSAK  
STYLE NO.: 2120500, 2120501, 2120502, 3120500, 3120501, 6120527, 6120528,  
6120538, 6120556, 6120557, 6120563, 6120573, 6120574, 6120577, 6120583, 6120586,  
6120590, 8120509, 8120510, 8120514, 8120515, 8120526, 8120554, 8120555, 8120561,  
8120569, 8120576, 8120579, 8120592, 8120593, 8120597, 8120598, 8120602, 8120605,  
8120616, 8120619, 8120621, 8120626, 8120641, 8120642, 8120652, 8120654, 8120656,  
8120661, 8120669, 8120670, 8120672, 8120679, 8120680, 8120681, 8120682, 8120683,  
8120685, 9120500, 9120502, 9120503, 9120504, 9120508, 9120509



<sup>1</sup> CNAS Accredited

<sup>2</sup> CMA Accredited

This analysis represents (within normal testing variances) the test results from the sample(s) submitted. The analysis may not represent the entire lot, batch or production run. In no event shall IDFL be responsible or liable for any direct, indirect, punitive, incidental, special, or consequential damages whatsoever arising out of or connected with the use of, misuse of, or reliance upon such results or analysis. This test report is subject to the Terms and Conditions found at [www.idfl.com](http://www.idfl.com).

**IDFL LABORATORY AND INSTITUTE**

**IDFL SALT LAKE**  
1455 South 1100 East  
Salt Lake City, UT 84105  
USA  
+1 801 467 7611  
info@idfl.com

**IDFL EUROPE AG**  
Zürcherstrasse 282  
CH-8500 Frauenfeld  
Switzerland  
+41 52 765 1574  
europe@idfl.com

**IDFL CHINA**  
Tonghui Mid-Road 688, Xiaoshan  
Hangzhou Zhejiang 311200  
China  
+86 571 8273 6561  
china@idfl.com

**IDFL TAIPEI**  
2F., No. 163 Sec. 2, Wenhua Rd.  
Banqiao District, New Taipei City  
Taiwan  
+886 2 2259 1178  
taiwan@idfl.com

Approved By

www.idfl.com  
Client 2313  
XS  
Sample 1 of 4



# Final Test Report

Sample ID-Treated Material SM314S  
90% Washed White Duck Down(Texcote  
Nano DWR)

**IDFL # 20-305087**

Zhejiang Samsung Down Co., Ltd  
Thu 2 April 2020

## Test Orders Summary

Test	Test Component	Result	Expected Value
<b>Content (Modified for Canada Evaluation) IDFB Part 3 2013</b>	Down Clusters	92.2%	67.5%
<b>Species Down &amp; Feathers IDFB Part 12 2013</b>	Total Goose	0%	
	Total Duck	100%	
<b>Color Separation IDFB Part 16 2013</b>	Dark Percentage	0.08%	
<b>Steam Fill Power IDFB Part 10-B 2015</b>	Final Fill Power Volume	800 in <sup>3</sup> /30g	800 in <sup>3</sup> /30g
<b>Oxygen IDFB Part 7 2013</b>	Oxygen	1.6 mg/100g	
<b>Turbidity IDFB Part 11 2013</b>	Turbidity Glass Tube	1000 mm	
<b>Fat and Oil IDFB Part 4 2013</b>	Fat and Oil	1.0%	
<b>Moisture IDFB Part 5 2013</b>	Moisture Content	9.3%	
<b>Odor IDFL 30 2018</b>	Actual Lab Test	4	

<sup>1</sup> CNAS Accredited

<sup>2</sup> CMA Accredited

This analysis represents (within normal testing variances) the test results from the sample(s) submitted. The analysis may not represent the entire lot, batch or production run. In no event shall IDFL be responsible or liable for any direct, indirect, punitive, incidental, special, or consequential damages whatsoever arising out of or connected with the use of, misuse of, or reliance upon such results or analysis. This test report is subject to the Terms and Conditions found at [www.idfl.com](http://www.idfl.com).

### IDFL LABORATORY AND INSTITUTE

**IDFL SALT LAKE**  
1455 South 1100 East  
Salt Lake City, UT 84105  
USA  
+1 801 467 7611  
[info@idfl.com](mailto:info@idfl.com)

**IDFL EUROPE AG**  
Zürcherstrasse 282  
CH-8500 Frauenfeld  
Switzerland  
+41 52 765 1574  
[europe@idfl.com](mailto:europe@idfl.com)

**IDFL CHINA**  
Tonghui Mid-Road 688, Xiaoshan  
Hangzhou Zhejiang 311200  
China  
+86 571 8273 6561  
[china@idfl.com](mailto:china@idfl.com)

**IDFL TAIPEI**  
2F., No. 163 Sec. 2, Wenhua Rd.  
Banqiao District, New Taipei City  
Taiwan  
+886 2 2259 1178  
[taiwan@idfl.com](mailto:taiwan@idfl.com)

Approved By  
[www.idfl.com](http://www.idfl.com)  
Client 2313  
XS  
Sample 1 of 4  
Page 2 of 6



# Final Test Report

Sample ID-Treated Material SM314S  
90% Washed White Duck Down(Texcote  
Nano DWR)

**IDFL # 20-305087**

Zhejiang Samsung Down Co., Ltd  
Thu 2 April 2020

## Content (Modified for Canada Evaluation) IDFB Part 3 2013

Down Clusters	92.2%
Down Fibers	3.1%
Waterfowl Feather Fibers	1.7%
Waterfowl Feathers	2.9%
Waterfowl Feathers > 6 cm	0.0%
Broken and Damaged Waterfowl Feathers	0.0%
Quill	0.0%
Landfowl	0.0%
Residue	0.1%
Total	100.0%

### Result(s) Used for Evaluation

<b>Waterfowl Feather Fibers and Down Fibers</b>	<b>4.8%</b>
Waterfowl Feather Fibers (1.7%)	
+ Down Fibers (3.1%)	
<b>Waterfowl Feathers &amp; Fibers and Down Clusters &amp; Fibers</b>	<b>99.9%</b>
Waterfowl Feathers (2.9%)	
+ Waterfowl Feathers > 6 cm (0.0%)	
+ Broken and Damaged Waterfowl Feathers (0.0%)	
+ Waterfowl Feather Fibers (1.7%)	
+ Down Clusters (92.2%)	
+ Down Fibers (3.1%)	
<b>Residue and Landfowl</b>	<b>0.1%</b>
Residue (0.1%)	
+ Landfowl (0.0%)	

## Species Down & Feathers IDFB Part 12 2013<sup>1, 2</sup>

Goose Down	0%
Duck Down	100%
Goose Feathers	0%
Duck Feathers	100%
Total Goose	0%
Total Duck	100%

<sup>1</sup> CNAS Accredited

<sup>2</sup> CMA Accredited

This analysis represents (within normal testing variances) the test results from the sample(s) submitted. The analysis may not represent the entire lot, batch or production run. In no event shall IDFL be responsible or liable for any direct, indirect, punitive, incidental, special, or consequential damages whatsoever arising out of or connected with the use of, misuse of, or reliance upon such results or analysis. This test report is subject to the Terms and Conditions found at [www.idfl.com](http://www.idfl.com).

### IDFL LABORATORY AND INSTITUTE

**IDFL SALT LAKE**  
1455 South 1100 East  
Salt Lake City, UT 84105  
USA  
+1 801 467 7611  
info@idfl.com

**IDFL EUROPE AG**  
Zürcherstrasse 282  
CH-8500 Frauenfeld  
Switzerland  
+41 52 765 1574  
europe@idfl.com

**IDFL CHINA**  
Tonghui Mid-Road 688, Xiaoshan  
Hangzhou Zhejiang 311200  
China  
+86 571 8273 6561  
china@idfl.com

**IDFL TAIPEI**  
2F., No. 163 Sec. 2, Wenhua Rd.  
Banqiao District, New Taipei City  
Taiwan  
+886 2 2259 1178  
taiwan@idfl.com

Approved By  
[www.idfl.com](http://www.idfl.com)  
Client 2313  
XS  
Sample 1 of 4  
Page 3 of 6



# Final Test Report

Sample ID-Treated Material SM314S  
90% Washed White Duck Down(Texcote  
Nano DWR)

**IDFL # 20-305087**  
Zhejiang Samsung Down Co., Ltd  
Thu 2 April 2020

## Color Separation IDFB Part 16 2013<sup>1, 2</sup>

White Percentage	99.92%
Dark Percentage	0.08%
Total	100.00%

## Steam Fill Power IDFB Part 10-B 2015<sup>1, 2</sup>

Volume 800 in<sup>3</sup>/30g

## Oxygen IDFB Part 7 2013<sup>1, 2</sup>

Oxygen 1.6 mg/100g

## Turbidity IDFB Part 11 2013<sup>1, 2</sup>

Turbidity Glass Tube	1000 mm
Turbidity NTU	0.48 NTU

## Fat and Oil IDFB Part 4 2013

Fat and Oil 1.0%

<sup>1</sup> CNAS Accredited

<sup>2</sup> CMA Accredited

This analysis represents (within normal testing variances) the test results from the sample(s) submitted. The analysis may not represent the entire lot, batch or production run. In no event shall IDFL be responsible or liable for any direct, indirect, punitive, incidental, special, or consequential damages whatsoever arising out of or connected with the use of, misuse of, or reliance upon such results or analysis. This test report is subject to the Terms and Conditions found at [www.idfl.com](http://www.idfl.com).

### IDFL LABORATORY AND INSTITUTE

**IDFL SALT LAKE**  
1455 South 1100 East  
Salt Lake City, UT 84105  
USA  
+1 801 467 7611  
[info@idfl.com](mailto:info@idfl.com)

**IDFL EUROPE AG**  
Zürcherstrasse 282  
CH-8500 Frauenfeld  
Switzerland  
+41 52 765 1574  
[europe@idfl.com](mailto:europe@idfl.com)

**IDFL CHINA**  
Tonghui Mid-Road 688, Xiaoshan  
Hangzhou Zhejiang 311200  
China  
+86 571 8273 6561  
[china@idfl.com](mailto:china@idfl.com)

**IDFL TAIPEI**  
2F., No. 163 Sec. 2, Wenhua Rd.  
Banqiao District, New Taipei City  
Taiwan  
+886 2 2259 1178  
[taiwan@idfl.com](mailto:taiwan@idfl.com)

Approved By  
[www.idfl.com](http://www.idfl.com)  
Client 2313  
XS  
Sample 1 of 4  
Page 4 of 6



# Final Test Report

Sample ID-Treated Material SM314S  
90% Washed White Duck Down(Texcote  
Nano DWR)

**IDFL # 20-305087**

Zhejiang Samsung Down Co., Ltd  
Thu 2 April 2020

## Moisture IDFB Part 5 2013<sup>1, 2</sup>

Moisture Content **9.3%**

<sup>1</sup> CNAS Accredited

<sup>2</sup> CMA Accredited

This analysis represents (within normal testing variances) the test results from the sample(s) submitted. The analysis may not represent the entire lot, batch or production run. In no event shall IDFL be responsible or liable for any direct, indirect, punitive, incidental, special, or consequential damages whatsoever arising out of or connected with the use of, misuse of, or reliance upon such results or analysis. This test report is subject to the Terms and Conditions found at [www.idfl.com](http://www.idfl.com).

### IDFL LABORATORY AND INSTITUTE

**IDFL SALT LAKE**  
1455 South 1100 East  
Salt Lake City, UT 84105  
USA  
+1 801 467 7611  
[info@idfl.com](mailto:info@idfl.com)

**IDFL EUROPE AG**  
Zürcherstrasse 282  
CH-8500 Frauenfeld  
Switzerland  
+41 52 765 1574  
[europe@idfl.com](mailto:europe@idfl.com)

**IDFL CHINA**  
Tonghui Mid-Road 688, Xiaoshan  
Hangzhou Zhejiang 311200  
China  
+86 571 8273 6561  
[china@idfl.com](mailto:china@idfl.com)

**IDFL TAIPEI**  
2F., No. 163 Sec. 2, Wenhua Rd.  
Banqiao District, New Taipei City  
Taiwan  
+886 2 2259 1178  
[taiwan@idfl.com](mailto:taiwan@idfl.com)

Approved By  
[www.idfl.com](http://www.idfl.com)  
Client 2313  
XS  
Sample 1 of 4  
Page 5 of 6



# Final Test Report

Sample ID-Treated Material SM314S  
90% Washed White Duck Down(Texcote  
Nano DWR)

**IDFL # 20-305087**

Zhejiang Samsung Down Co., Ltd  
Thu 2 April 2020

## Odor IDFL 30 2018

### CHECK-IN

<b>1. ODOR UPON ARRIVAL :</b> Odor upon opening of shipping box	Normal
<b>2. INITIAL ODOR of SAMPLE :</b> Odor of sample after removal from shipping box and any packaging material (such as plastic, etc.)	Normal
<b>3. LATER ODOR of SAMPLE :</b> (24 hours after removal from packaging)	N/A
<b>4. ODOR of PACKAGING :</b> (Any odor that might exist in packaging)	Normal

### OPENING ROOM

<b>5. INITIAL ODOR - FILL MATERIAL :</b> Odor of fill material immediately after cutting open samples	Normal
<b>6. LATER ODOR - FILL MATERIAL :</b> Odor after leaving fill material in a screened box for 24 hours	N/A

### LAB TEST

<b>7. ACTUAL LAB TEST :</b> (1-5 'Nose' Lab Test)	4
<b>8. OTHER COMMENTS :</b>	N/A
<b>9. CONCLUSION :</b>	N/A

### Rating Scale

1	Very Bad
2	Bad/Strange
3	Borderline
4	Normal Odor
5	Above

<sup>1</sup> CNAS Accredited

<sup>2</sup> CMA Accredited

This analysis represents (within normal testing variances) the test results from the sample(s) submitted. The analysis may not represent the entire lot, batch or production run. In no event shall IDFL be responsible or liable for any direct, indirect, punitive, incidental, special, or consequential damages whatsoever arising out of or connected with the use of, misuse of, or reliance upon such results or analysis. This test report is subject to the Terms and Conditions found at [www.idfl.com](http://www.idfl.com).

### IDFL LABORATORY AND INSTITUTE

**IDFL SALT LAKE**  
1455 South 1100 East  
Salt Lake City, UT 84105  
USA  
+1 801 467 7611  
info@idfl.com

**IDFL EUROPE AG**  
Zürcherstrasse 282  
CH-8500 Frauenfeld  
Switzerland  
+41 52 765 1574  
europe@idfl.com

**IDFL CHINA**  
Tonghui Mid-Road 688, Xiaoshan  
Hangzhou Zhejiang 311200  
China  
+86 571 8273 6561  
china@idfl.com

**IDFL TAIPEI**  
2F., No. 163 Sec. 2, Wenhua Rd.  
Banqiao District, New Taipei City  
Taiwan  
+886 2 2259 1178  
taiwan@idfl.com

Approved By

www.idfl.com  
Client 2313  
XS  
Sample 1 of 4  
Page 6 of 6



# DWR Test Report

Zhejiang Samsung Down Co., Ltd  
Michael Mao  
Michael@samsungdown.com



## Sample Info – Treated

IDFL #: 20-305087  
Sample ID: Sample ID-Treated Material  
SM314S 90% Washed White Duck Down(Texcote Nano DWR),  
BRAND NAME:RUDSAK  
STYLE NO.: 2120500, 2120501, 2120502, 3120500, 3120501,  
6120527, 6120528,  
6120538, 6120556, 6120557, 6120563, 6120573, 6120574, 6120577,  
6120583, 6120586,  
6120590, 8120509, 8120510, 8120514, 8120515, 8120526, 8120554,  
8120555, 8120561,  
8120569, 8120576, 8120579, 8120592, 8120593, 8120597, 8120598,  
8120602, 8120605,  
8120616, 8120619, 8120621, 8120626, 8120641, 8120642, 8120652,  
8120654, 8120656,  
8120661, 8120669, 8120670, 8120672, 8120679, 8120680, 8120681,  
8120682, 8120683,  
8120685, 9120500, 9120502, 9120503, 9120504, 9120508, 9120509

Date: 2-Apr-2020

Expected Results		Test Results	
Content:	90.0%	Content:	92.2%
Species:	Duck	Species:	Duck
Fill Power:	800in <sup>3</sup> /30g	Fill Power:	800in <sup>3</sup> /30g
Fat & Oil	N/A	Fat & Oil	1.0%

Approved By:

## IDFL LABORATORY AND INSTITUTE

[www.idfl.com](http://www.idfl.com)

Certified Laboratory: IDFB • EDFA Member: AATCC • ADFC • ASTM • CFDIA • DAC • EDFA • IABFLO • TFEA

**IDFL**  
1455 South 1100 East  
Salt Lake City, UTAH 84105 USA  
Tel: +1 8001 467 7611  
Fax: +1 801 467 7711  
info@idfl.com

**IDFL EUROPE**  
Zürcherstrasse 282  
8500 Frauenfeld SWITZERLAND  
Tel: +41 52 765 1574  
Fax: +41 52 770 1574  
europe@idfl.com

**IDFL CHINA**  
Tonghui Mid-Road 118, Xiaoshan  
Hangzhou, Zhejiang 311208 CHINA  
Tel: +86 571 8273 6561  
Fax: +86 571 8389 9179  
china@idfl.com

**IDFL TAIPEI**  
3F/4F, No. 163, Sec. 2, Wenua Rd.  
Banqiao, New Taipei City 22047 TAIWAN  
Tel: +886 2 2259 1178  
Fax: +886 2 2252 0738  
taiwan@idfl.com

4/2/2020  
Page 1 of 3



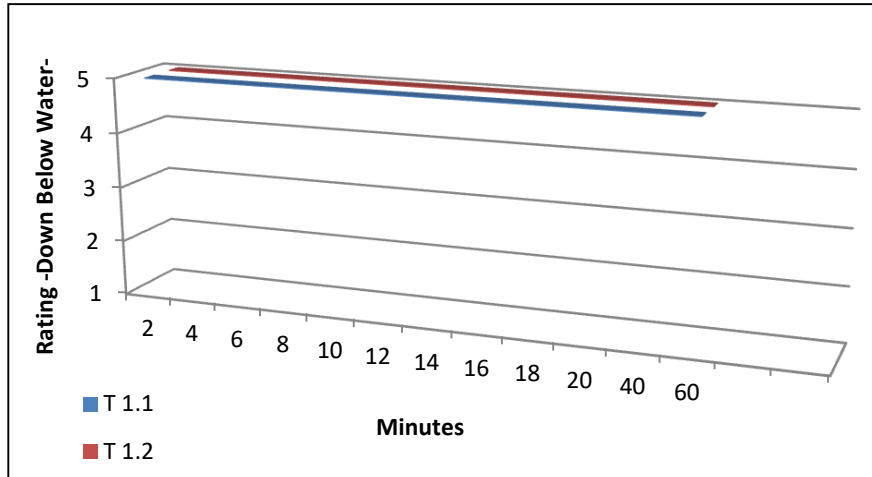


# DWR Test Report

Zhejiang Samsung Down Co., Ltd  
Michael Mao  
Michael@samsungdown.com

## IDFB 18-A

Hydrophobic Shake Test  
Measurement Interval - 2 Minutes



5 Down Completely Above Water  
1 Down Completely Under Water

Minutes	T 1.1	T 1.2
2	5	5
4	5	5
6	5	5
8	5	5
10	5	5
12	5	5
14	5	5
16	5	5
18	5	5
20	5	5
40	5	5
60	5	5

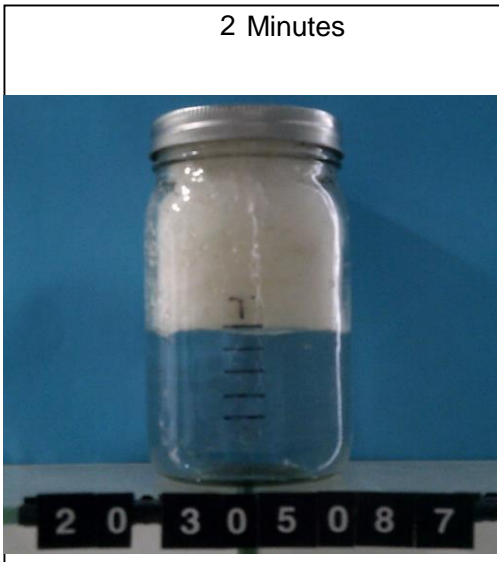
Treated material remains at rating 5 after: **60 minutes**



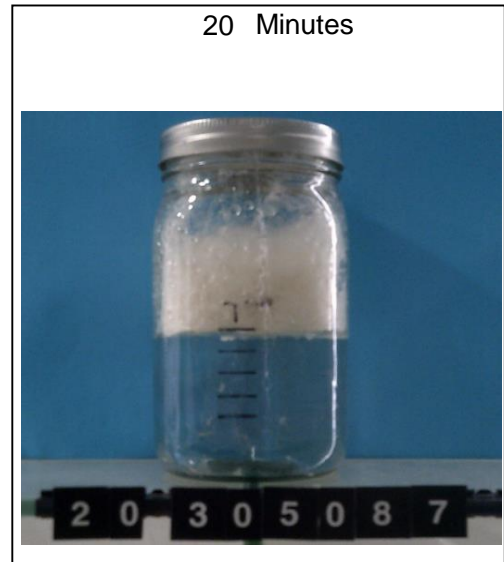
# DWR Test Report

Zhejiang Samsung Down Co., Ltd  
Michael Mao  
Michael@samsungdown.com

**IDFB 18-A** (Picture References)  
Hydrophobic Shake Test  
Measured Time Interval – 2 Minutes

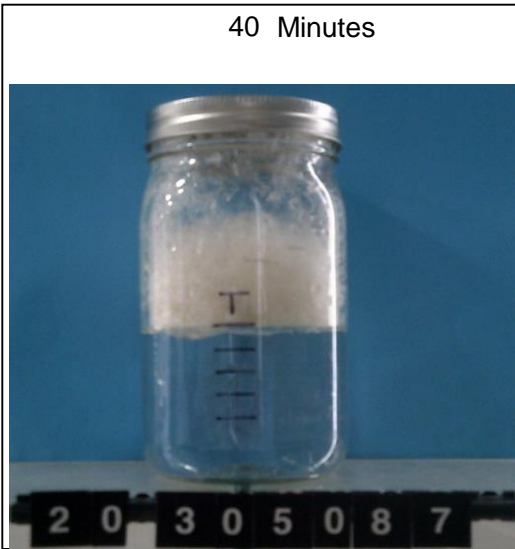


Rating: 5

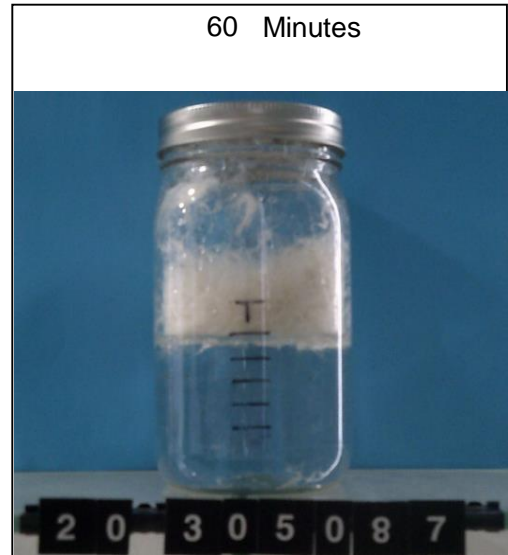


Rating: 5

**IDFB 18-A**  
Hydrophobic Shake Test  
Measured Time Interval – 2 Minutes



Rating: 5



Rating: 5

## IDFL LABORATORY AND INSTITUTE

[www.idfl.com](http://www.idfl.com)

Certified Laboratory: IDFB • EDFA Member: AATCC • ADFC • ASTM • CFDA • DAC • EDFA • IABFLO • TFEA

**IDFL**  
1455 South 1100 East  
Salt Lake City, UTAH 84105 USA  
Tel: +1 8001 467 7611  
Fax: +1 801 467 7711  
info@idfl.com

**IDFL EUROPE**  
Zürcherstrasse 282  
8500 Frauenfeld SWITZERLAND  
Tel: +41 52 765 1574  
Fax: +41 52 770 1574  
europe@idfl.com

**IDFL CHINA**  
Tonghui Mid-Road 118, Xiaoshan  
Hangzhou, Zhejiang 311208 CHINA  
Tel: +86 571 8273 6561  
Fax: +86 571 8389 9179  
china@idfl.com

**IDFL TAIPEI**  
3F/4F. No. 163, Sec. 2, Wenua Rd.  
Banqiao, New Taipei City 22047 TAIWAN  
Tel: +886 2 2259 1178  
Fax: +886 2 2252 0738  
taiwan@idfl.com