



**COSTCO WHOLESALE**  
**COMPLIANCE, QUALITY and**  
**PERFORMANCE TEST**  
**PROTOCOL SL-2307**  
**SOFTLINES APPAREL**

**IDFL #: 20-305675**

Date: 2-Apr-2020

**EVALUATION REPORT - Market: Canada**

DOWN AND FEATHER TESTING					
Test Property	Test Method	Based on expected Down label: <b>70%</b>		Results	Rating
Content Analysis	IDFB 3	Down Cluster	Min 52.5%	75.6%	Pass
		Down Fibre		2.6%	
		Feather Fibre		1.9%	
		Total Fibre	Max 44.0%	4.5%	Pass
		Waterfowl Feathers ≤ 60 mm	Max 47.5%	18.9%	Pass
		Waterfowl Feathers > 60 mm	Max 30.0%	0.0%	Pass
		Broken / Damaged Feathers		0.3%	
		Quill		0.0%	
		Landfowl Residue		0.2%	
		Landfowl and Residue	Max 5.0%	0.5%	Pass
<b>TOTAL</b>				<b>100.0%</b>	
Species Identification	IDFB 12	Goose Down		0%	
		Duck Down		100%	
		Goose Feathers		0%	
		Duck Feathers		100%	
<b>TOTAL GOOSE</b>		Claim: DUCK	Min 90% Duck	<b>0%</b>	Pass
<b>TOTAL DUCK</b>				<b>100%</b>	
Color White	IDFB 16	Claim: White	Max Dark 1.0%	0.50%	Pass
Fill Power	IDFB 10B	(in <sup>3</sup> / 30g)	Max -5% of 600	650	Pass
Turbidity	IDFB 11	(Others, JP, TW, KOR, AUS)	Min 500	1000	Pass
Oxygen Number	IDFB 7	(Others, TW, KOR, AUS)	Min 4.8	1.6	Pass
Penetration resistance of cloth-Tumbling method	IDFL 20-1 (Fabric) IDFL 20-2 (Bedding) IDFL 20-3 (Garments) IDFL 20-4 (Channeled Fabric)	Before Laundering	Min 4	N/A	N/A
		After 1x Laundering	Min 4	N/A	N/A
Net Fill Weight	IDFB 17	Expected Fill Weight (g) N/A	Min N/A	N/A	N/A

<b>IDFL Labeling Suggestion for Canadian Market:</b>	Provincial Label: Duck Down & Duck Feathers Federal Label: 70% duck down, 30% duck feathers
------------------------------------------------------	------------------------------------------------------------------------------------------------------

Comments:

Approved by

**IDFL LABORATORY AND INSTITUTE**

[www.idfl.com](http://www.idfl.com)

Certified Laboratory: IDFB • EDFA Associations: AATCC • ADFC • ASTM • CFDA • DAC • EDFA • IABFLO • TFEA

**IDFL USA**  
 1455 South 1100 East  
 Salt Lake City, UT 84105 USA  
 Tel: +1 801 467 7611  
 info@idfl.com

**IDFL EUROPE**  
 Zürcherstrasse 282  
 8500 Frauenfeld SWITZERLAND  
 Tel: +41 52 765 1574  
 europe@idfl.com

**IDFL CHINA**  
 Tonghu Mid-Road 688, Jinlu Yinzuo  
 Building 1 Floor 5 Hangzhou, Zhejiang 311208 CHINA  
 Tel: +86 571 8273 6561  
 china@idfl.com

**IDFL TAIWAN**  
 3F/4F., No. 163, Sec. 2, Wenhua Rd.  
 Banqiao, New Taipei City 22047 TAIWAN  
 Tel: +886 2 2259 1178  
 taiwan@idfl.com

# Test Report

Sample ID - Treated Material SM317S  
70% Washed White Duck Down(Texcote  
Nano DWR)

IDFL # 20-305675

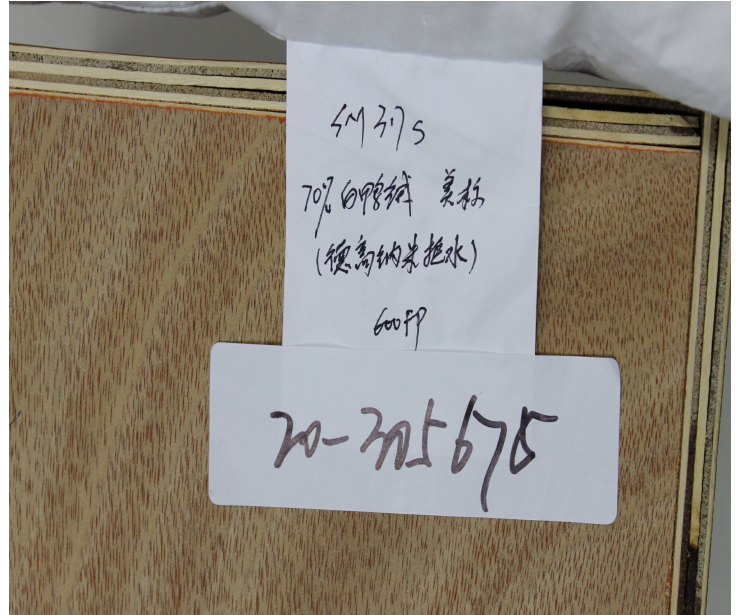
Zhejiang Samsung Down Co., Ltd  
Thu 2 April 2020

Michael Mao  
Zhejiang Samsung Down Co., Ltd  
No.288, Xiaoshao East Road,  
Xintang Street,  
Xiaoshan District,  
Hangzhou, Zhejiang 311201  
China

michael@samsungdown.com  
cyrel@samsungdown.com  
Normal (8-10 Days)

Arrival Date: Mon 23 March 2020  
Report Date: Thu 2 April 2020

**Sample Type:** Pillow  
**Shipped By:** SF 1073950251861  
**Label:** No filling label  
**Sample Identification:** Sample ID - Treated Material  
SM317S 70% Washed White  
Duck Down(Texcote Nano DWR)  
BRAND NAME: RUDSAK  
STYLE NO: COSTCO7120502/7120504 & RUDSAK  
L120507/L120515/L120516/L120517/L120518/L120519/L120520/L120521



<sup>1</sup> CNAS Accredited

<sup>2</sup> CMA Accredited

This analysis represents (within normal testing variances) the test results from the sample(s) submitted. The analysis may not represent the entire lot, batch or production run. In no event shall IDFL be responsible or liable for any direct, indirect, punitive, incidental, special, or consequential damages whatsoever arising out of or connected with the use of, misuse of, or reliance upon such results or analysis. This test report is subject to the Terms and Conditions found at [www.idfl.com](http://www.idfl.com).

## IDFL LABORATORY AND INSTITUTE

**IDFL SALT LAKE**  
1455 South 1100 East  
Salt Lake City, UT 84105  
USA  
+1 801 467 7611  
[info@idfl.com](mailto:info@idfl.com)

**IDFL EUROPE AG**  
Zürcherstrasse 282  
CH-8500 Frauenfeld  
Switzerland  
+41 52 765 1574  
[europe@idfl.com](mailto:europe@idfl.com)

**IDFL CHINA**  
Tonghui Mid-Road 688, Xiaoshan  
Hangzhou Zhejiang 311200  
China  
+86 571 8273 6561  
[china@idfl.com](mailto:china@idfl.com)

**IDFL TAIPEI**  
2F., No. 163 Sec. 2, Wenhua Rd.  
Banqiao District, New Taipei City  
Taiwan  
+886 2 2259 1178  
[taiwan@idfl.com](mailto:taiwan@idfl.com)

Approved By  
  
[www.idfl.com](http://www.idfl.com)  
Client 2313  
XS  
Sample 1 of 1  
Page 1 of 6



# Test Report

Sample ID - Treated Material SM317S  
70% Washed White Duck Down(Texcote  
Nano DWR)

**IDFL # 20-305675**

Zhejiang Samsung Down Co., Ltd  
Thu 2 April 2020

## Test Orders Summary

Test	Test Component	Result	Expected Value
Content (Modified for Canada Evaluation) IDFB Part 3 2013	Down Clusters	75.6%	52.5%
Species Down & Feathers IDFB Part 12 2013	Total Goose	0%	
	Total Duck	100%	
Color Separation IDFB Part 16 2013	Dark Percentage	0.50%	
Steam Fill Power IDFB Part 10-B 2015	Final Fill Power Volume	650 in <sup>3</sup> /30g	600 in <sup>3</sup> /30g
Oxygen IDFB Part 7 2013	Oxygen	1.6 mg/100g	
Turbidity IDFB Part 11 2013	Turbidity Glass Tube	1000 mm	
Fat and Oil IDFB Part 4 2013	Fat and Oil	1.2%	
Moisture IDFB Part 5 2013	Moisture Content	8.3%	
Odor IDFL 30 2018	Actual Lab Test	4	

<sup>1</sup> CNAS Accredited

<sup>2</sup> CMA Accredited

This analysis represents (within normal testing variances) the test results from the sample(s) submitted. The analysis may not represent the entire lot, batch or production run. In no event shall IDFL be responsible or liable for any direct, indirect, punitive, incidental, special, or consequential damages whatsoever arising out of or connected with the use of, misuse of, or reliance upon such results or analysis. This test report is subject to the Terms and Conditions found at [www.idfl.com](http://www.idfl.com).

### IDFL LABORATORY AND INSTITUTE

**IDFL SALT LAKE**  
1455 South 1100 East  
Salt Lake City, UT 84105  
USA  
+1 801 467 7611  
[info@idfl.com](mailto:info@idfl.com)

**IDFL EUROPE AG**  
Zürcherstrasse 282  
CH-8500 Frauenfeld  
Switzerland  
+41 52 765 1574  
[europe@idfl.com](mailto:europe@idfl.com)

**IDFL CHINA**  
Tonghui Mid-Road 688, Xiaoshan  
Hangzhou Zhejiang 311200  
China  
+86 571 8273 6561  
[china@idfl.com](mailto:china@idfl.com)

**IDFL TAIPEI**  
2F., No. 163 Sec. 2, Wenhua Rd.  
Banqiao District, New Taipei City  
Taiwan  
+886 2 2259 1178  
[taiwan@idfl.com](mailto:taiwan@idfl.com)

Approved By  
[www.idfl.com](http://www.idfl.com)  
Client 2313  
XS  
Sample 1 of 1  
Page 2 of 6



# Test Report

Sample ID - Treated Material SM317S  
70% Washed White Duck Down(Texcote  
Nano DWR)

**IDFL # 20-305675**

Zhejiang Samsung Down Co., Ltd  
Thu 2 April 2020

## Content (Modified for Canada Evaluation) IDFB Part 3 2013

Down Clusters	75.6%
Down Fibers	2.6%
Waterfowl Feather Fibers	1.9%
Waterfowl Feathers	18.9%
Waterfowl Feathers > 6 cm	0.0%
Broken and Damaged Waterfowl Feathers	0.3%
Quill	0.0%
Landfowl	0.2%
Residue	0.5%
Total	100.0%

### Result(s) Used for Evaluation

<b>Waterfowl Feather Fibers and Down Fibers</b>	<b>4.5%</b>
Waterfowl Feather Fibers (1.9%)	
+ Down Fibers (2.6%)	
<b>Waterfowl Feathers &amp; Fibers and Down Clusters &amp; Fibers</b>	<b>99.3%</b>
Waterfowl Feathers (18.9%)	
+ Waterfowl Feathers > 6 cm (0.0%)	
+ Broken and Damaged Waterfowl Feathers (0.3%)	
+ Waterfowl Feather Fibers (1.9%)	
+ Down Clusters (75.6%)	
+ Down Fibers (2.6%)	
<b>Residue and Landfowl</b>	<b>0.7%</b>
Residue (0.5%)	
+ Landfowl (0.2%)	

## Species Down & Feathers IDFB Part 12 2013<sup>1, 2</sup>

Goose Down	0%
Duck Down	100%
Goose Feathers	0%
Duck Feathers	100%
Total Goose	0%
Total Duck	100%

<sup>1</sup> CNAS Accredited

<sup>2</sup> CMA Accredited

This analysis represents (within normal testing variances) the test results from the sample(s) submitted. The analysis may not represent the entire lot, batch or production run. In no event shall IDFL be responsible or liable for any direct, indirect, punitive, incidental, special, or consequential damages whatsoever arising out of or connected with the use of, misuse of, or reliance upon such results or analysis. This test report is subject to the Terms and Conditions found at [www.idfl.com](http://www.idfl.com).

### IDFL LABORATORY AND INSTITUTE

**IDFL SALT LAKE**  
1455 South 1100 East  
Salt Lake City, UT 84105  
USA  
+1 801 467 7611  
info@idfl.com

**IDFL EUROPE AG**  
Zürcherstrasse 282  
CH-8500 Frauenfeld  
Switzerland  
+41 52 765 1574  
europe@idfl.com

**IDFL CHINA**  
Tonghui Mid-Road 688, Xiaoshan  
Hangzhou Zhejiang 311200  
China  
+86 571 8273 6561  
china@idfl.com

**IDFL TAIPEI**  
2F., No. 163 Sec. 2, Wenhua Rd.  
Banqiao District, New Taipei City  
Taiwan  
+886 2 2259 1178  
taiwan@idfl.com

Approved By  
[www.idfl.com](http://www.idfl.com)  
Client 2313  
XS  
Sample 1 of 1  
Page 3 of 6



# Test Report

Sample ID - Treated Material SM317S  
70% Washed White Duck Down(Texcote  
Nano DWR)

**IDFL # 20-305675**  
Zhejiang Samsung Down Co., Ltd  
Thu 2 April 2020

## Color Separation IDFB Part 16 2013<sup>1, 2</sup>

White Percentage	99.50%
Dark Percentage	0.50%
Total	100.00%

## Steam Fill Power IDFB Part 10-B 2015<sup>1, 2</sup>

Volume 650 in<sup>3</sup>/30g

## Oxygen IDFB Part 7 2013<sup>1, 2</sup>

Oxygen 1.6 mg/100g

## Turbidity IDFB Part 11 2013<sup>1, 2</sup>

Turbidity Glass Tube	1000 mm
Turbidity NTU	0.51 NTU

## Fat and Oil IDFB Part 4 2013

Fat and Oil 1.2%

<sup>1</sup> CNAS Accredited

<sup>2</sup> CMA Accredited

This analysis represents (within normal testing variances) the test results from the sample(s) submitted. The analysis may not represent the entire lot, batch or production run. In no event shall IDFL be responsible or liable for any direct, indirect, punitive, incidental, special, or consequential damages whatsoever arising out of or connected with the use of, misuse of, or reliance upon such results or analysis. This test report is subject to the Terms and Conditions found at [www.idfl.com](http://www.idfl.com).

### IDFL LABORATORY AND INSTITUTE

**IDFL SALT LAKE**  
1455 South 1100 East  
Salt Lake City, UT 84105  
USA  
+1 801 467 7611  
info@idfl.com

**IDFL EUROPE AG**  
Zürcherstrasse 282  
CH-8500 Frauenfeld  
Switzerland  
+41 52 765 1574  
europe@idfl.com

**IDFL CHINA**  
Tonghui Mid-Road 688, Xiaoshan  
Hangzhou Zhejiang 311200  
China  
+86 571 8273 6561  
china@idfl.com

**IDFL TAIPEI**  
2F., No. 163 Sec. 2, Wenhua Rd.  
Banqiao District, New Taipei City  
Taiwan  
+886 2 2259 1178  
taiwan@idfl.com

Approved By  
[www.idfl.com](http://www.idfl.com)  
Client 2313  
XS  
Sample 1 of 1  
Page 4 of 6



# Test Report

Sample ID - Treated Material SM317S  
70% Washed White Duck Down(Texcote  
Nano DWR)

**IDFL # 20-305675**

Zhejiang Samsung Down Co., Ltd  
Thu 2 April 2020

## Moisture IDFB Part 5 2013<sup>1, 2</sup>

Moisture Content **8.3%**

<sup>1</sup> CNAS Accredited

<sup>2</sup> CMA Accredited

This analysis represents (within normal testing variances) the test results from the sample(s) submitted. The analysis may not represent the entire lot, batch or production run. In no event shall IDFL be responsible or liable for any direct, indirect, punitive, incidental, special, or consequential damages whatsoever arising out of or connected with the use of, misuse of, or reliance upon such results or analysis. This test report is subject to the Terms and Conditions found at [www.idfl.com](http://www.idfl.com).

### IDFL LABORATORY AND INSTITUTE

**IDFL SALT LAKE**  
1455 South 1100 East  
Salt Lake City, UT 84105  
USA  
+1 801 467 7611  
[info@idfl.com](mailto:info@idfl.com)

**IDFL EUROPE AG**  
Zürcherstrasse 282  
CH-8500 Frauenfeld  
Switzerland  
+41 52 765 1574  
[europe@idfl.com](mailto:europe@idfl.com)

**IDFL CHINA**  
Tonghui Mid-Road 688, Xiaoshan  
Hangzhou Zhejiang 311200  
China  
+86 571 8273 6561  
[china@idfl.com](mailto:china@idfl.com)

**IDFL TAIPEI**  
2F., No. 163 Sec. 2, Wenhua Rd.  
Banqiao District, New Taipei City  
Taiwan  
+886 2 2259 1178  
[taiwan@idfl.com](mailto:taiwan@idfl.com)

Approved By  
[www.idfl.com](http://www.idfl.com)  
Client 2313  
XS  
Sample 1 of 1  
Page 5 of 6



# Test Report

Sample ID - Treated Material SM317S  
70% Washed White Duck Down(Texcote  
Nano DWR)

**IDFL # 20-305675**

Zhejiang Samsung Down Co., Ltd  
Thu 2 April 2020

## Odor IDFL 30 2018

### CHECK-IN

<b>1. ODOR UPON ARRIVAL :</b> Odor upon opening of shipping box	Normal
<b>2. INITIAL ODOR of SAMPLE :</b> Odor of sample after removal from shipping box and any packaging material (such as plastic, etc.)	Normal
<b>3. LATER ODOR of SAMPLE :</b> (24 hours after removal from packaging)	N/A
<b>4. ODOR of PACKAGING :</b> (Any odor that might exist in packaging)	Normal

### OPENING ROOM

<b>5. INITIAL ODOR - FILL MATERIAL :</b> Odor of fill material immediately after cutting open samples	Normal
<b>6. LATER ODOR - FILL MATERIAL :</b> Odor after leaving fill material in a screened box for 24 hours	N/A

### LAB TEST

<b>7. ACTUAL LAB TEST :</b> (1-5 'Nose' Lab Test)	4
<b>8. OTHER COMMENTS :</b>	N/A
<b>9. CONCLUSION :</b>	N/A

### Rating Scale

1	Very Bad
2	Bad/Strange
3	Borderline
4	Normal Odor
5	Above

<sup>1</sup> CNAS Accredited

<sup>2</sup> CMA Accredited

This analysis represents (within normal testing variances) the test results from the sample(s) submitted. The analysis may not represent the entire lot, batch or production run. In no event shall IDFL be responsible or liable for any direct, indirect, punitive, incidental, special, or consequential damages whatsoever arising out of or connected with the use of, misuse of, or reliance upon such results or analysis. This test report is subject to the Terms and Conditions found at [www.idfl.com](http://www.idfl.com).

### IDFL LABORATORY AND INSTITUTE

**IDFL SALT LAKE**  
1455 South 1100 East  
Salt Lake City, UT 84105  
USA  
+1 801 467 7611  
info@idfl.com

**IDFL EUROPE AG**  
Zürcherstrasse 282  
CH-8500 Frauenfeld  
Switzerland  
+41 52 765 1574  
europe@idfl.com

**IDFL CHINA**  
Tonghui Mid-Road 688, Xiaoshan  
Hangzhou Zhejiang 311200  
China  
+86 571 8273 6561  
china@idfl.com

**IDFL TAIPEI**  
2F., No. 163 Sec. 2, Wenhua Rd.  
Banqiao District, New Taipei City  
Taiwan  
+886 2 2259 1178  
taiwan@idfl.com

Approved By

www.idfl.com  
Client 2313  
XS  
Sample 1 of 1  
Page 6 of 6



# DWR Test Report

Zhejiang Samsung Down Co., Ltd  
Michael Mao  
Michael@samsungdown.com



## Sample Info – Treated

IDFL #: 20-305675  
Sample ID: Sample ID - Treated Material  
SM317S 70% Washed White  
Duck Down(Texcote Nano DWR)  
BRAND NAME: RUDSAK  
STYLE NO: COSTCO7120502/7120504 &  
RUDSAK  
L120507/L120515/L120516/L120517/L12051  
8/L120519/L120520/L120521

Date: 2-Apr-2020

Expected Results		Test Results	
Content:	70.0%	Content:	75.6%
Species:	Duck	Species:	Duck
Fill Power:	600in <sup>3</sup> /30g	Fill Power:	650in <sup>3</sup> /30g
Fat & Oil	N/A	Fat & Oil	1.2%

Approved By:



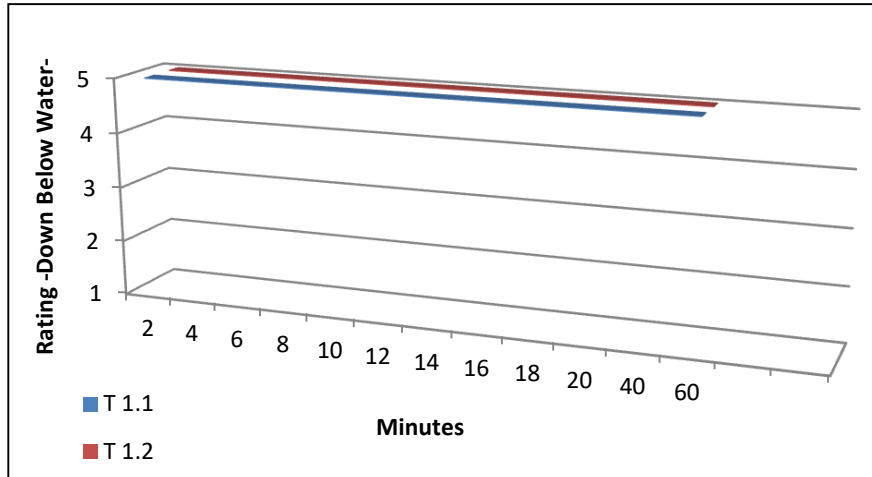


# DWR Test Report

Zhejiang Samsung Down Co., Ltd  
Michael Mao  
Michael@samsungdown.com

## IDFB 18-A

Hydrophobic Shake Test  
Measurement Interval - 2 Minutes



5 Down Completely Above Water  
1 Down Completely Under Water

Minutes	T 1.1	T 1.2
2	5	5
4	5	5
6	5	5
8	5	5
10	5	5
12	5	5
14	5	5
16	5	5
18	5	5
20	5	5
40	5	5
60	5	5

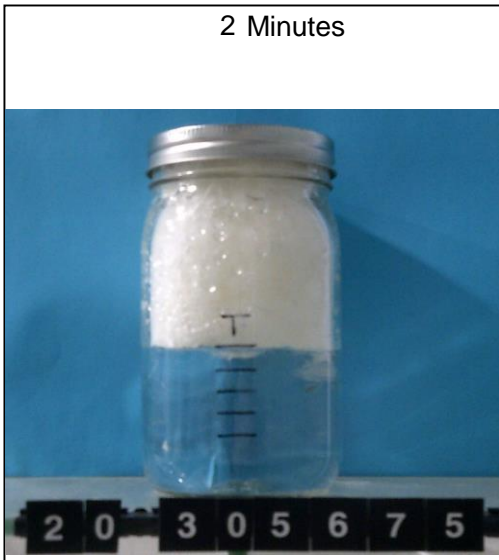
Treated material remains at rating 5 after: **60 minutes**



# DWR Test Report

Zhejiang Samsung Down Co., Ltd  
Michael Mao  
Michael@samsungdown.com

**IDFB 18-A** (Picture References)  
Hydrophobic Shake Test  
Measured Time Interval – 2 Minutes

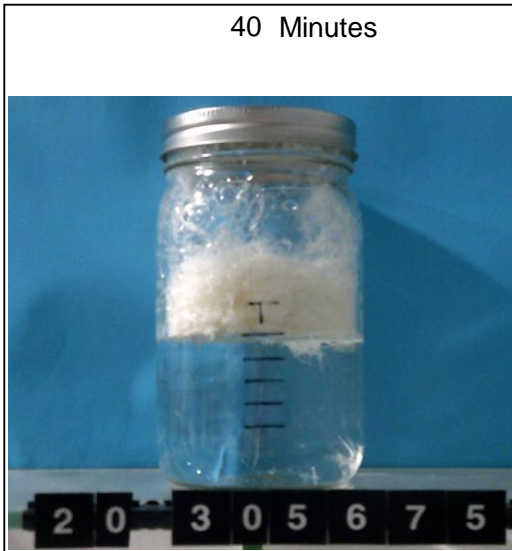


Rating: 5



Rating: 5

**IDFB 18-A**  
Hydrophobic Shake Test  
Measured Time Interval – 2 Minutes



Rating: 5



Rating: 5

## IDFL LABORATORY AND INSTITUTE

[www.idfl.com](http://www.idfl.com)

Certified Laboratory: IDFB • EDFA Member: AATCC • ADFC • ASTM • CFDA • DAC • EDFA • IABFLO • TFEA

**IDFL**  
1455 South 1100 East  
Salt Lake City, UTAH 84105 USA  
Tel: +1 8001 467 7611  
Fax: +1 801 467 7711  
info@idfl.com

**IDFL EUROPE**  
Zürcherstrasse 282  
8500 Frauenfeld SWITZERLAND  
Tel: +41 52 765 1574  
Fax: +41 52 770 1574  
europe@idfl.com

**IDFL CHINA**  
Tonghui Mid-Road 118, Xiaoshan  
Hangzhou, Zhejiang 311208 CHINA  
Tel: +86 571 8273 6561  
Fax: +86 571 8389 9179  
china@idfl.com

**IDFL TAIPEI**  
3F/4F. No. 163, Sec. 2, Wenua Rd.  
Banqiao, New Taipei City 22047 TAIWAN  
Tel: +886 2 2259 1178  
Fax: +886 2 2252 0738  
taiwan@idfl.com